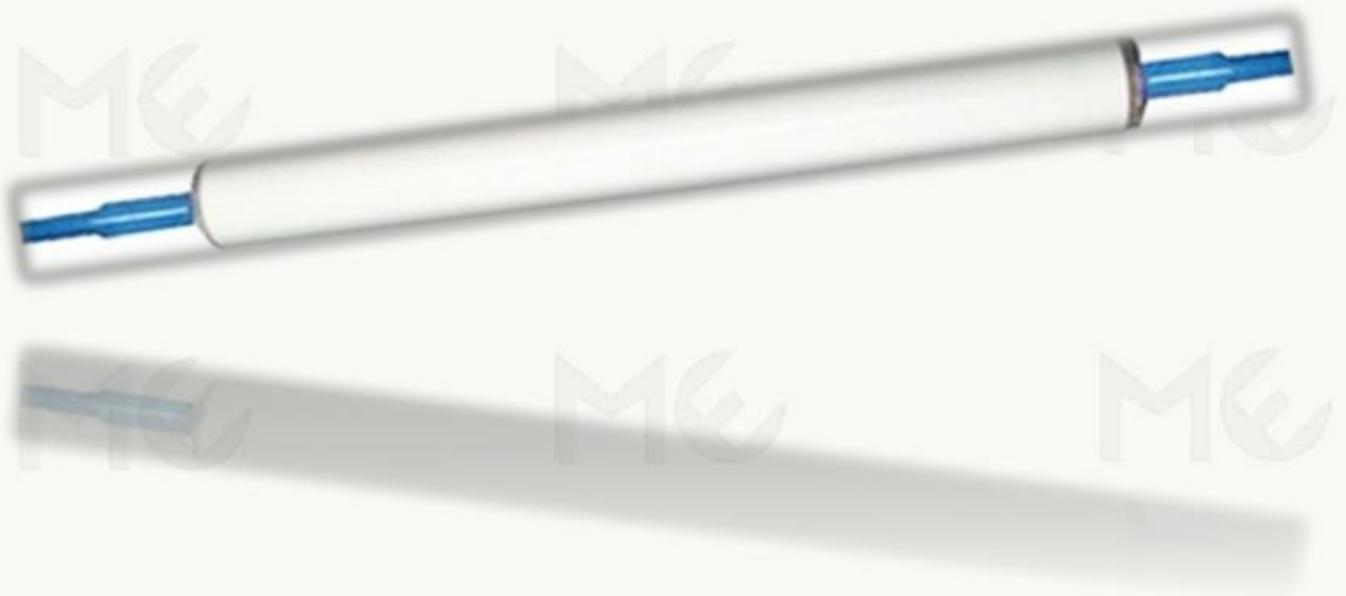


# ***Ceramic Fiber Roll***

Let our expertise  
help you achieve the goal



website : [www.metro-everest.com](http://www.metro-everest.com)



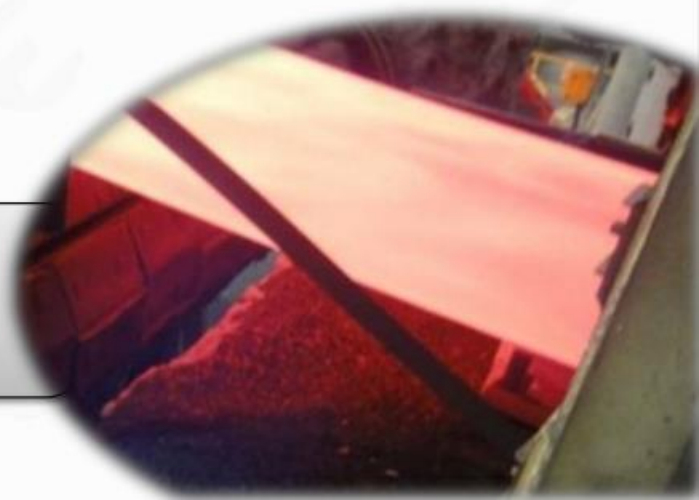
# ***Non-Asbestos Furnace Roll***

## ***Ceramic Fiber Roll***

In Annealing and Pickling lines of stainless steel plants require extremely smooth surface. The stainless steel sheets are first heated by the Annealing process. In this process, the sheets are heated up to 1200°C! At this temperature, the sheet becomes extremely sensitive to marks and scratches that are caused by normal steel furnace rolls. These steel rolls develop corrosion and rust, which would do critical damage to the quality of the stainless steel surface.

As a technology leader, ME have tested numerous materials, ceramic fiber rolls are proved to be the best for both high-quality and environmental-friendly purposes.

**ME Ceramic Fiber Roll  
using On-Line**



# ***Benefits of Using ME Ceramic Fiber Roll***



- Longer rolls life-span against competitors (the average life-span of ME ceramic fiber roll can achieve to 60 days, including three times regrinding.)
- Excellent heat-resistance on high temperature (greater performance increases productivity and decreases maintenance costs)
- Extremely smooth roll surface leads to the highest quality of stainless steel sheets
- Environmental-friendly (Non-asbestos material prevents further pollution the earth.)

**ME Ceramic Fiber Roll  
After regrinding with  
smooth surface**



## ***Inquiries & Customer List***

In the event of your esteemed company might be interested in having a quotation, please kindly provide us with the following information:

- Covering length and outer dimension of the core
- Final outer dimension of the roll
- Operating temperature(s) of the furnace which the roll is applied with.

<b>Country</b>	<b>Company</b>
<b>Taiwan</b>	<b>Yieh United Steel Corp.</b>
	<b>Tang Eng Iron Works Co., Ltd</b>
	<b>Tung Mung Development Co., Ltd.</b>
	<b>Chien Shing Stainless Steel Co., Ltd</b>
<b>China</b>	<b>ThyssenKrupp-Shanghai (SKS)</b>



Get In Touch

**METRO-EVEREST  
ENTERPRISES CO., LTD.**

**TEL : +886-7-733-6377**

**FAX : +886-7-733-6353**

**ADDRESS : NO. 42, MEI-SHAN RD. NIAO SONG DIST.**

**KAOHSIUNG CITY. TAIWAN R.O.C.**

**EMAIL : [sales@metro-everest.com](mailto:sales@metro-everest.com)**